

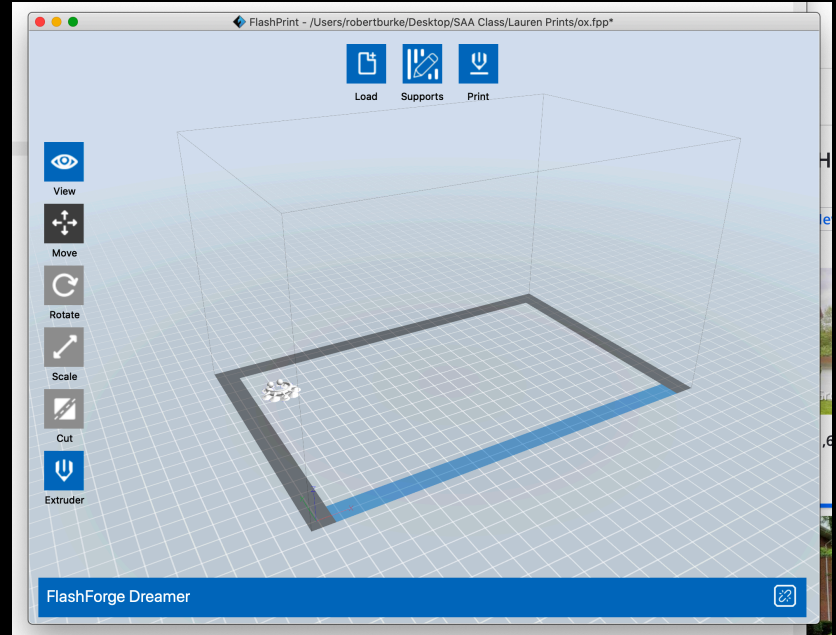


INTRO TO 3D PRINTING

Day 3

FlashPrint

- Load
 - .gx, .stl, .obj, .jpg, .bmp, .fpp
 - .gx cannot be edited
- 6 Ways to Load Files
- Can Load More Than One .stl File on Build Platform
- Can Load a Picture

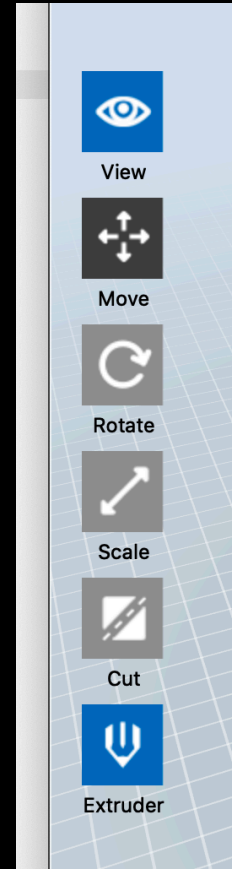


FlashPrint Controls

Must Have Object

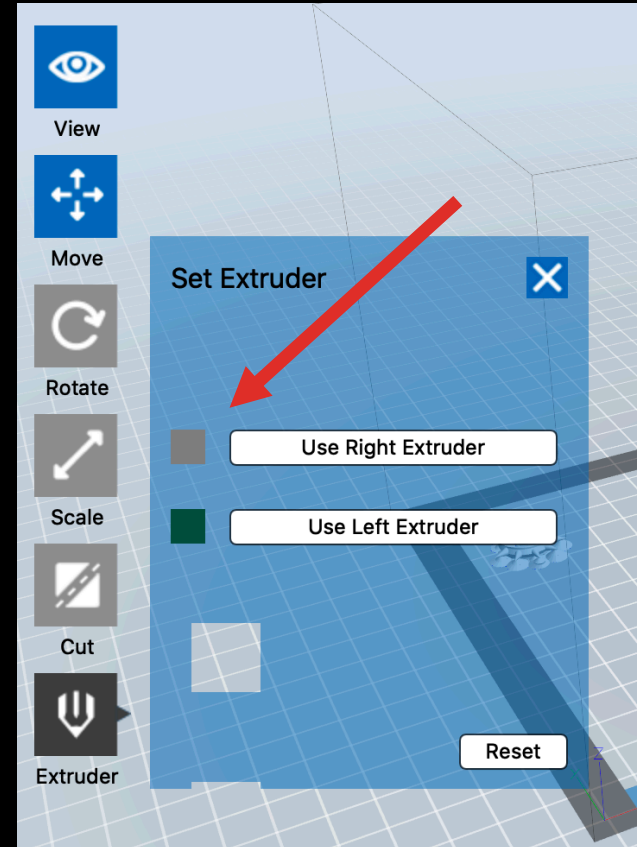
Selected to Utilize:

- View
- Move
- Rotate
- Scale
- Cut
- Extruder



Extruder Control

- Right Extruder = ABS
- Left Extruder = PLA
- What Colors?
 - ABS:
 - White, Black, Red, Natural, Grey
 - PLA:
 - White, Black, Blue, Pink



Slicer Parameters

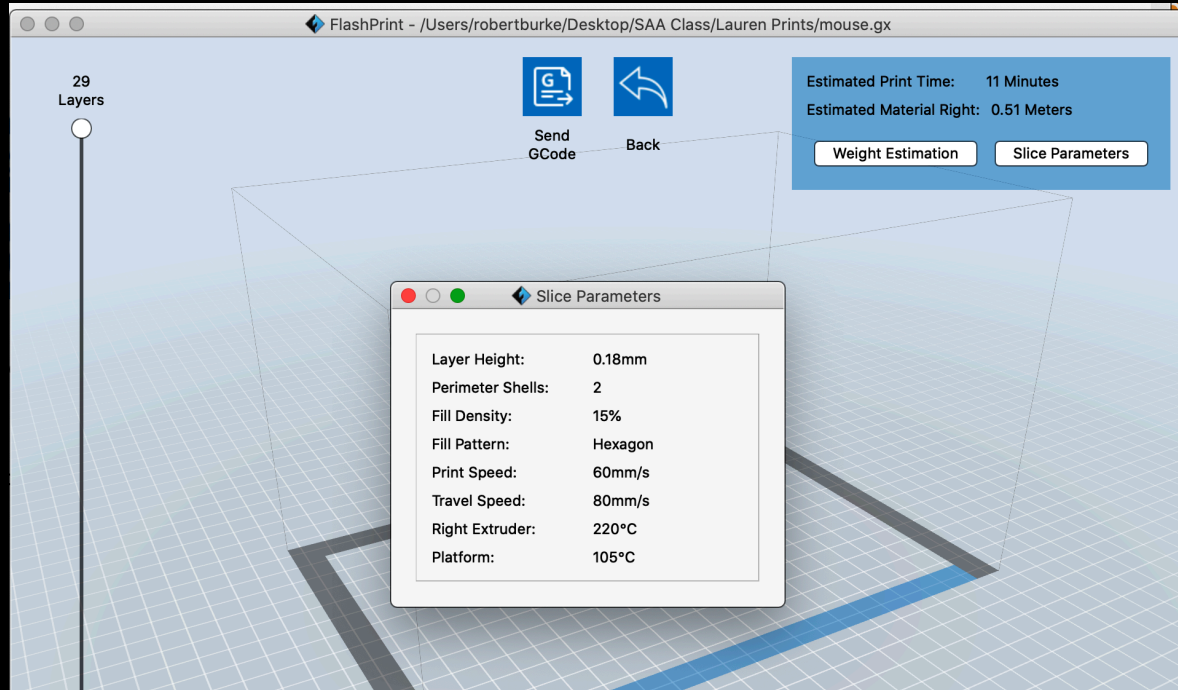
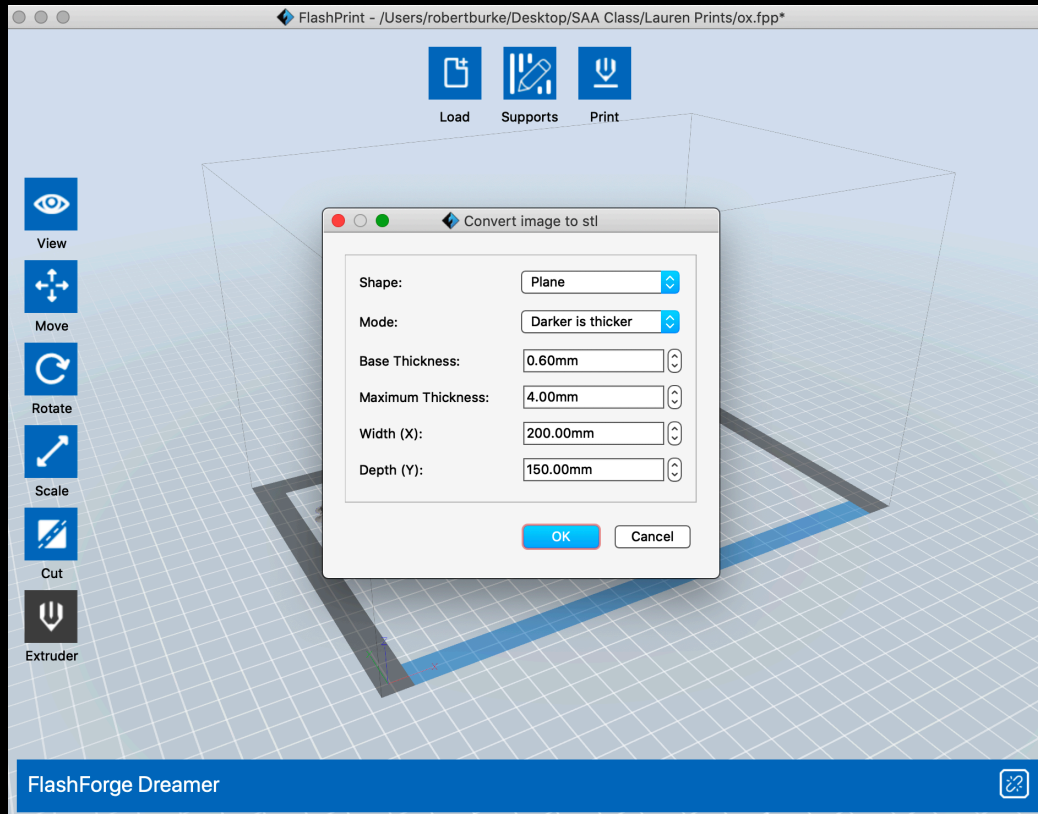


Photo Parameters



Support Parameters

